

**200 Beringer Place
Chapel Hill, NC 27516
MLS #992423**



Immaculately maintained and elegantly updated this "almost" new end unit town home is remarkably spacious and inviting. Upon arrival one notices the smart design of matching low maintenance and high end materials of vinyl graced by a brick facade. Nicely landscaped, this larger corner home site welcomes you home! One step inside the foyer shares a preview of the home from every angle. Open ceilings bring sweeping light in to the home from all angles. Columns define space and offer limitless possibilities for use.

The main floor offers hardwoods and large tumbled tile floors throughout. The dining room features nickel stained light fixtures and a built in wine rack. It's conveniently located off the kitchen for entertaining and dinner parties. And what a kitchen! This kitchen is all about the upgrades. Beautifully crafted with medium stained cherry cabinets are luxury defined. They sparkle against a neutral tile backsplash that was hand selected. Eye-catching granite counters and a smartly designed granite working island with featured sink make this a chef's delight. Stainless appliances add to the ambiance of elegance defined! A beautiful palladium window catches your eye and brings in the day's sunlight in to the breakfast area. The owner's suite has great closet space and a smartly- designed executive bath featuring ten inch tumbled tile floors, continued elegance of the cherry cabinets and separate tile surround shower and a soaking garden tub.

The family room is surrounded by windows and a two story ceiling. It features more of the main floor's eye-catching hardwood floors and a media niche expertly placed over the direct vent gas log fireplace. A cute patio and the backyard is accessed through the family room off a private door. The space in this room is truly breath-taking.

Delight your senses and follow your feet to the second floor via a wrought iron -laden staircase. Substantial and beautiful carpeting guides you upstairs to the loft alcove and additional two sleeping quarters. Each bedroom is generous in proportion and features high vaulted ceilings and a "Jack and Jill" tiled bathroom offering each guest or family member convenience, privacy and a little indulgence in luxury.

Vineyard Square is situated at the crossroads of Weaver Dairy and Homestead Roads in Chapel Hill and conveniently located near playgrounds, ball fields, dog parks, shopping, theaters and much more.

Another Fine Property Marketed by Masha Halpern & The Smart Move Team

**919-951-1780
877-478-4669**
Masha@MashaHalpern.com



Information About Our Home



Dining: 12.5 x 13.2

Kitchen: 13 x 14

Master Bedroom: 13.3 x 15.9

Bedroom 2: 14.11 x 15.7

Patio: 12 x 10

Storage: 14.8 x 9.6

Family Room: 18.6 x 12.11

Breakfast: 11.37 x 7.11

Bedroom 3: 11.10 x 15.3

Garage: 15.11 x 20.7

Alcove: 9.6 x 9



Another Fine Property Marketed by Masha Halpern & The Smart Move Team

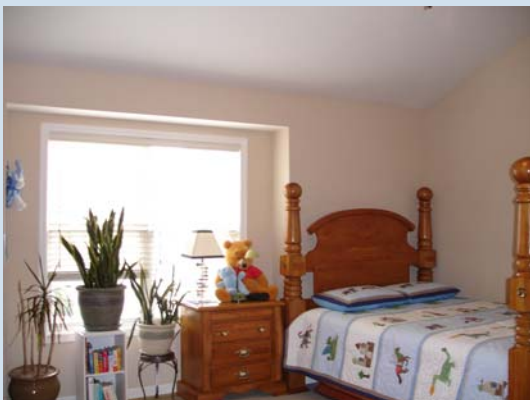
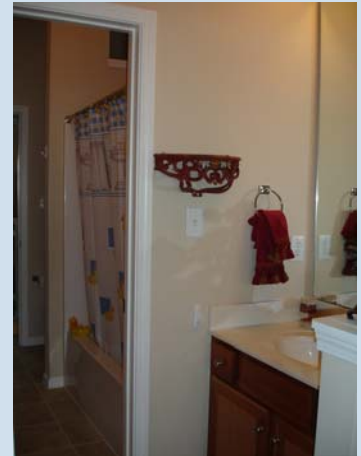
919-951-1780

877-478-4669

Masha@MashaHalpern.com



Additional Information



Another Fine Property Marketed by Masha Halpern & The Smart Move Team

919-951-1780
877-478-4669
Masha@MashaHalpern.com

